

## Programme de comparaison d'indicateurs de qualité

The **Société Québécoise de Biologie Clinique** is pleased to invite you to participate in its new program of quality indicators comparison. Monitoring processes from blood sampling to the communication of results for different types of patients, the program will allow users to follow their improvement and compare their data with the results of other laboratories across Canada.

We have developed a **user-friendly, web-based platform** for the registration of users and the submission of data with associated analytical profiles. Thanks to personalized and interactive reports, users can observe the evolution of their performance over time, and compare it with other laboratories’.

### Event 2024 #01

- Data collection : **April**
- Opening Date : **2024-05-27**
- Closing Date : **2024-06-14**
- Report available **2024-07-05**

### Event 2024 #02

- Data collection : **August**
- Opening Date : **2024-09-30**
- Closing Date : **2024-10-25**
- Report available **2024-11-15**

### Event 2023 #03

- Data collection : **December**
- Opening Date : **2025-01-06**
- Closing Date : **2025-02-07**
- Report available **2025-02-21**

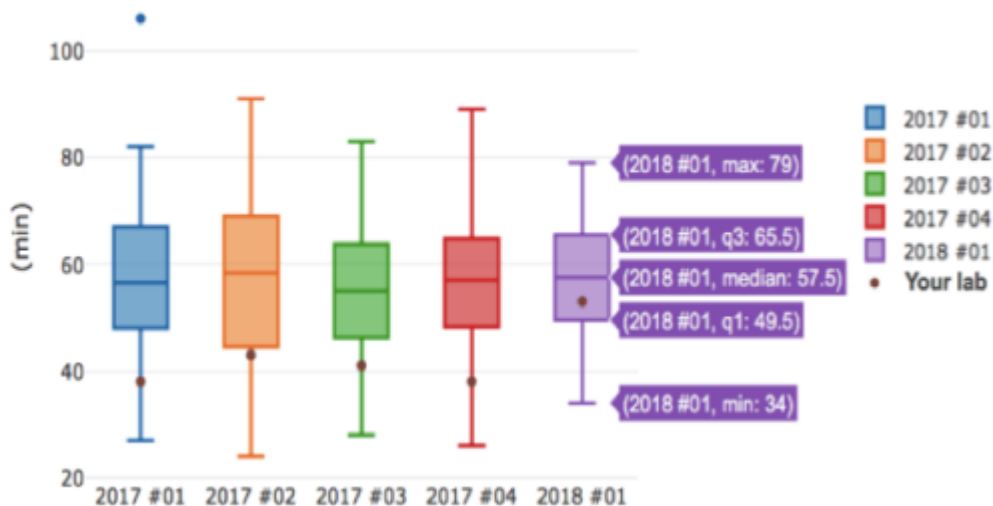
## Our 2024 Quality Indicators:

## Programme de comparaison d'indicateurs de qualité

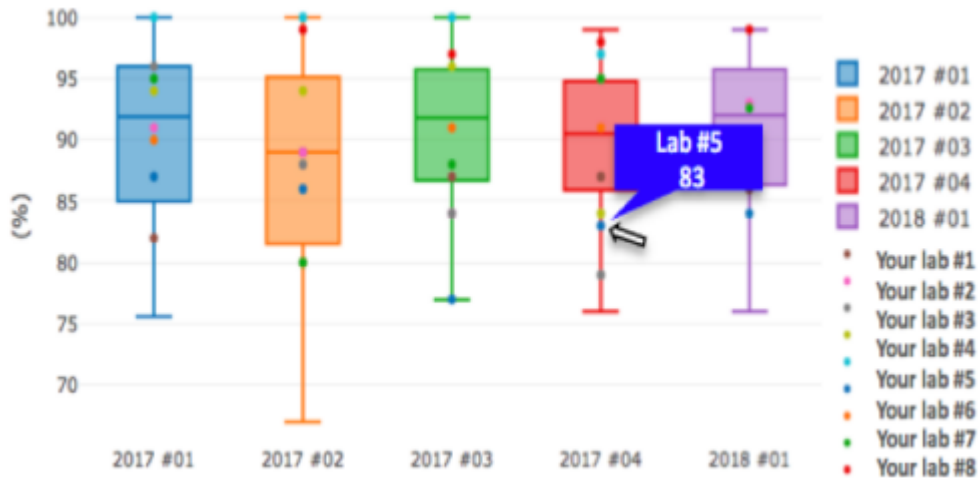
TAT Indicators		
Quality Indicators	Type of TAT	Type of patients
1. Troponin: TAT at 90 <sup>th</sup> percentile	Analytical	Emergency
2. Troponin: TAT at 90 <sup>th</sup> percentile	Clinical	Emergency
3. Troponin: Rate of TAT ≤ 60 min	Analytical	Emergency
4. Troponin: Rate of TAT ≤ 60 min	Clinical	Emergency
5. Potassium: TAT at 90 <sup>th</sup> percentile	Analytical	Emergency
6. Potassium: TAT at 90 <sup>th</sup> percentile	Clinical	Emergency
7. Potassium: TAT at 90 <sup>th</sup> percentile	Analytical	Outpatients
8. Potassium: TAT at 90 <sup>th</sup> percentile	Clinical	Outpatients
Preanalytical Indicators		
9. Rate of hemolysis in clinical chemistry		
10. Rate of misidentified requests or samples		
11. Positive patient identification for glucose POCT		

Join us : [REGISTER](#)

**Personalized and interactive reports are generated after each cycle. Users can follow their performance over time and compare it with that of other laboratories simply by looking at a boxplot displaying the distribution of data.**



**Multisite users can analyze the performance of all laboratories in the same graphic. Reports can be personalized using the interactive legend.**



## Consult [Our Programs](#)

**We hope that you will join the success of our programs!**

Dr. Elie Kostantin, PhD, DEPD, CSPQ, FCACB, Clinical biochemist  
President of the platform of quality indicators of the SQBC

Dr. Vincent De Guire, PhD, DEPD, CSPQ, Clinical biochemist  
President of the CAQBC

Dre. Michaël Lehoux, PhD, DEPD, CSPQ, FCACB, Clinical biochemist  
President of the SQBC